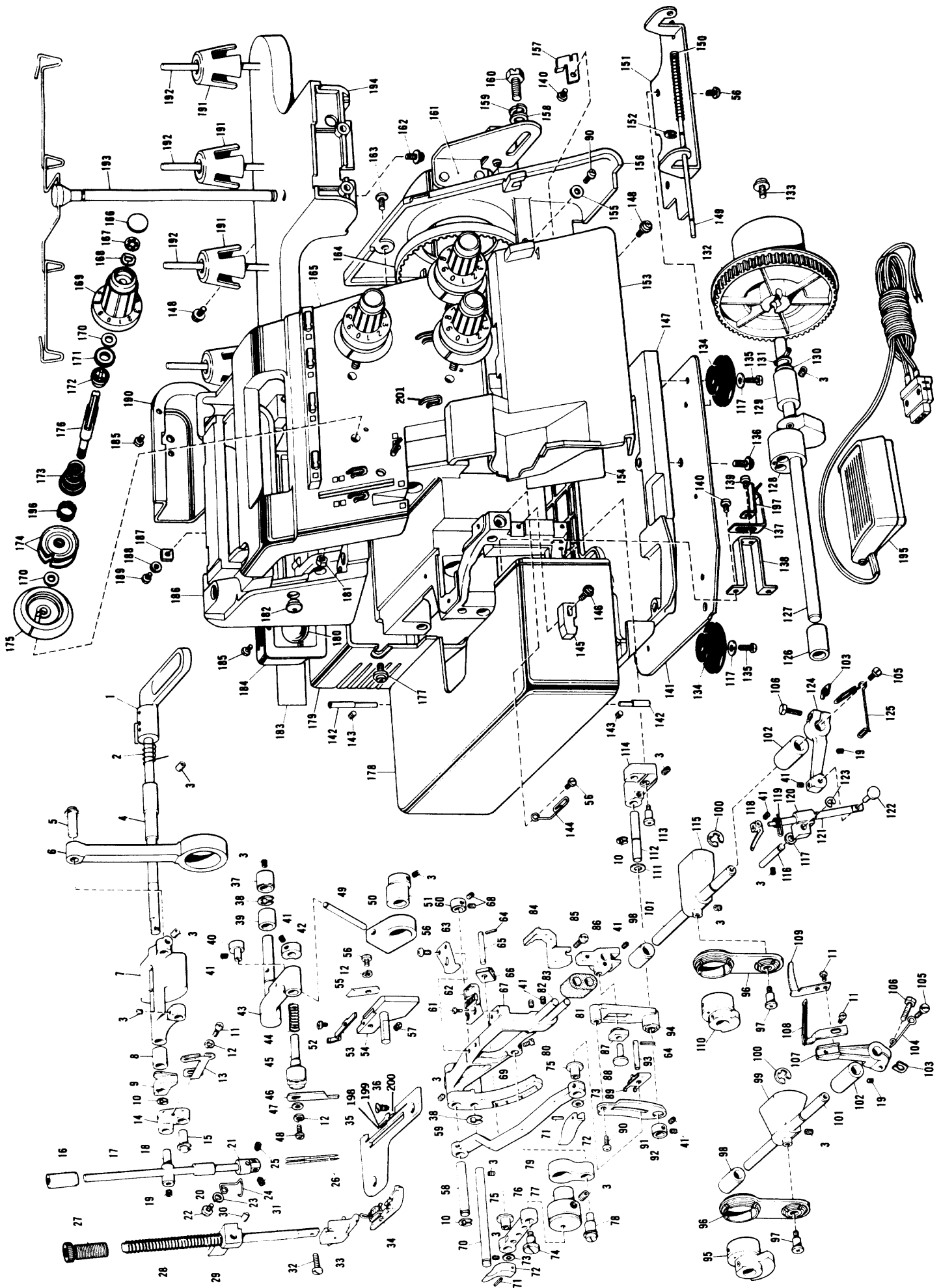


# **Spare part list**

## **360 D**



104 21 46-96 Huskylock 360 D

Pos	Detal jnr.	Benamning
1	415 44 43-01	Presser bar lifter
2	415 44 85-01	Spring
3	415 32 03-01	Set screw
4	415 31 74-01	Driving shaft bushing, right
5	415 31 92-01	Rod shaft
6	415 44 86-01	Needle bar rod
7	415 31 75-01	Needle bar driving lever
8	415 31 76-01	Driving shaft bushing, left
9	415 3178-01	Presser lifter cam
10	415 31 87-01	Stop ring
11	415 44 87-01	Set screw
12	415 30 98-01	Spring washer
13	415 30 33-01	Thread take up
14	415 31 79-01	Needle bar connecting link
15	415 31 83-01	Needle bar link shaft
16	415 31 81-01	Needle bar bushing, upper
17	415 44 44-01	Needle bar
18	415 31 80-01	Needle bar connecting stud
19	415 31 97-01	Set screw
20	415 32 03-01	Needle bar bushing, lower
21	415 44 45-01	Needle clamp
22	415 44 46-01	Set screw
23	415 44 47-01	Spring washer
24	415 44 48-01	Needle bar thread guide
25	415 44 88-01	Set screw
26	415 30 32-01	Needle # 14
27	415 32 04 01	Presser adjusting screw
28	415 32 05-01	Presser bar spring
29	415 32 07-01	Presser bar guide bracket
30	415 32 08-01	Set screw
31	415 32 09-01	Presser bar
32	415 30 34-01	Set screw
33	415 30 26-01	Presser holder assembly
34	415 30 35-01	Presser foot assembly
35	415 44 49-01	Needle plate
36	415 30 37-01	Set screw
37	415 32 18-01	Driving arm bushing, right
38	415 32 17-01	Stop ring
39	415 32 16-01	Driving arm bushing, left
40	415 32 15-01	Upper knife holder guide shaft
41	415 32 14-01	Set screw
42	415 32 19-01	Upper knife holder guide
43	415 32 12-01	Upper knife driving arm
44	415 32 11-01	Upper knife presser spring
45	415 32 10-01	Upper knife holder
46	415 30 05-01	Upper knife
47	415 33 05-01	Washer
48	415 30 38-01	Set screw
49	415 32 23-01	Upper knife driving lever
50	415 32 24-01	Upper knife driving lever guide!

<b>Pos</b>	<b>Detaljnr.</b>	<b>Benaming</b>
51	415 32 25-01	Upper knife eccentric wheel
52	415 44 91-01	Set screw
53	415 44 50-01	Needle guard
54	415 44 51-01	Lower knife holder
55	415 30 04-01	Lower knife
56	415 30 99-01	Set screw
57	415 32 22-01	Set screw
58	415 31 91-01	Feed bar feed link
59	415 31 95-01	Differential fees link
60	415 44 52-01	Set collar
61	415 44 92-01	Set screw
62	415 31 24-01	Main feed dog
63	415 32 78-01	Feed guide plate
64	415 32 35-01	Spring pin
65	415 32 45-01	Feed adjusting shaft
66	415 32 01-01	Spring
67	415 32 28-01	Main feed bar
68	415 44 93-01	Set screw
69	415 44 53-01	Feed bar lever
70	415 44 54-01	Feed shaft
71	415 32 35-01	Spring pin
72	415 30 94-01	Feed adjusting cam
73	415 31 66-01	Washer
74	415 32 39-01	Stud screw
75	415 32 38-01	Feed link bushing
76	415 32 37-01	Feed link
77	415 44 94-01	Feed eccentric wheel
78	415 32 41-01	Vertical adjusting shaft
79	415 32 42-01	Vertical feed lever
80	415 32 43-01	Set screw
81	415 32 51-01	Differential feed guide shaft
82	415 32 52-01	Main feed bar shaft
83	415 32 50-01	Sponge
84	415 31 22-01	Differential feed dog
85	415 31 23-01	Set screw
86	415 32 91-01	Differential feed bar
87	415 33 33-01	Slide block
88	415 33 32-01	Guide shaft
89	415 33 01-01	Spring plate
90	415 33 22-01	Set screw
91	415 34 56-01	Differential feed adjusting lever
92	415 31 88-01	Set collar
93	415 33 04-01	Differential feed link shaft
94	415 33 34-01	Differential feed lever
95	415 32 53-01	Double chain looper eccent. wheel
96	415 44 95-01	Double chain looper rod
97	415 44 96-01	Stud screw
98	415 44 97-01	Looper shaft bushing, rear
99	415 32 57-01	Under looperjoint

<b>Pos</b>	<b>Detaljnr.</b>	<b>Benaming</b>
100	415 32 59-01	Stop ring
101	415 44 98-01	Doubly chain looper shaft
102	415 32 60-01	Looper shaft bushing, front
103	415 44 99-01	Washer
104	415 30 51-01	Looper thread take up
105	415 30 53-01	Set screw
106	415 31 03-01	Set screw
107	415 31 02-01	Under looper lever
108	415 30 11-01	Double chain looper assembly
109	415 30 54-01	Needle guard plate
110	415 45 00-01	Looper rod eccentric wheel
111	415 33 35-01	Washer
112	415 33 36-01	Differential feed lever shaft
113	415 32 55-01	Stud screw
114	415 45 01-01	Differential feed lever base
115	415 32 62-01	Looper joint
116	415 32 63-01	Guide shaft
117	415 32 30-01	Washer
118	415 30 10-01	Over looper
119	415 30 59-01	Over looper thread guide
120	415 32 66-01	Over looper shaft guide
121	415 32 65-01	Over looper shaft
122	415 30 56-01	Over looper stud shaft
123	415 32 64-01	Stop ring
124	415 31 04-01	Over looper shaft lever
125	415 44 55-01	Looper thread take up
126	415 34 00-01	Driving shaft bushing, left
127	415 32 68-01	Driving shaft
128	415 32 69-01	Needle bar eccentric wheel ass.
129	415 32 70-01	Driving shaft bushing, right
130	415 32 71-01	Washer
131	415 32 72-01	Stop ring
132	415 45 02-01	Timing pulley
133	415 32 77-01	Set screw
134	415 32 81-01	Cushion
135	415 32 79-01	Set screw
136	415 32 93-01	Set screw
137	415 44 56-01	Cloth plate cover spring plate
138	415 44 57-01	Spring plate base
139	415 44 58-01	Set screw
140	415 44 59-01	Set screw
141	415 44 60-01	Base plate
142	415 36 72-01	Hinge pin
143	415 45 03-01	Set screw
144	415 44 61-01	Looper thread guide
145	415 44 62-01	Spring stopper
146	415 45 04-01	Set screw
147	415 45 05-01	Oil pan
148	415 45 06-01	Set screw
149	415 44 63-01	Front cover guide shaft

<b>Pos</b>	<b>Detaljnr.</b>	<b>Benaming</b>
150	415 32 96-01	Spring
151	415 44 64-01	Front cover hinge plate
152	415 32 98-01	Stop ring
153	415 44 65-01	Font cover
154	415 44 66-01	Threading sticker
155	415 31 66-01	Washer
156	415 44 67-01	Belt cover
157	415 44 68-01	Front cover hook
158	415 33 26-01	Washer
159	415 45 07-01	Spring washer
160	415 33 28-01	Set screw
161	415 44 69-01	Motor complete
162	415 45 08-01	Set screw
163	415 45 09-01	Set screw
164	415 45 10-01	Timing belt
165	415 44 70-01	Panel assembly
166	415 44 71-01	Tension dial plate
167	415 45 11-01	Stop ring
168	415 45 12-01	Spring washer
169	415 44 72-01	Needle tension dial, left
	415 45 13-01	Needle tension dial, right
	415 45 14-01	Over looper tension dial
	415 45 15-01	Under looper tension dial
170	415 45 16-01	Washer
171	415 45 17-01	Dial ratchet
172	415 45 18-01	Tension spring washer
173	415 45 19-01	Needle tension spring
	415 45 20-01	Over looper tension spring
	415 45 21-01	Under looper tension spring
174	415 45 22-01	Tension disc
175	415 44 73-01	Tension bracket
176	415 45 23-01	Tension control stud
177	415 45 24-01	Set screw
178	415 44 74-01	Cloth plate cover assembly
179	415 44 75-01	Motor cover
180	415 45 25-01	Sew light assembly
181	415 44 76-01	Nut
182	415 30 78-01	Cap
183	415 44 77-01	Model mark
184	415 44 78-01	Rear cover,r
185	415 45 26-01	Set screw
186	415 44 79-01	Machine body
187	415 33 15-01	Nut
188	415 33 16-01	Washer
189	415 33 18-01	Set screw
190	415 44 80-01	Rear cover, a
191	415 30 17-01	Spool cushion
192	415 33 23-01	Spool pin
193	415 45 34-01	Spool stand assembly
194	415 44 81-01	Spool stand base

<b>Pos</b>	<b>Detaljnr.</b>	<b>Benaming</b>
195	415 44 82-01	Controller complete
196	415 44 83-01	Under looper tension spring
197	415 44 84-01	Spring fixing plate
198	415 45 36-01	Stitch tongue (pin)
199	415 45 37 01	Stitch tongue (plate)
200	415 45 38-01	Screw
201	415 45 39-01	Thread guide
	415 30 90-01	Vinyl bag for accessories
	415 45 27-01	Screw driver
	415 45 28-01	Pincette
	415 45 29-01	Machine brush
	415 45 30-01	Spool cap
	415 45 31-01	Wrench 1,5
	415 45 32-01	Thread net
	415 45 33-01	Instruction book
	415 30 92-01	Machine cover